

How It Works

- The Ally Wearable connects to your phone or tablet via Bluetooth. **Keep Bluetooth on, and the app open when using. Reopen app if mistakenly closed so data will be sent.** If the connection is temporarily lost, the device stores data and automatically syncs when reconnected.

Remember

- MākuSafe identifies hazards and risks, **nothing personal.**
- There is **no continuous tracking** of workers.

Use governed by MākuSafe User License Agreement:

makusafe.com/terms-and-conditions

Safety Information at makusafe.com/safety_details

support@makusafe.com



Version: Apr 2026

All Rights Reserved © 2026 MākuSafe Corp.

1201 Maple St., West Des Moines, IA 50265 | 515-850-0995



MĀKUSAFE

FIELD KIT

Welcome To A Safer Way To Work.

Your MākuSafe Ally Wearable Device collects safety data while you work in the field, so your company can identify and address; hazards, risks, and exposures to keep you safe while working.

Getting Started:

Languages & Tutorial:



1. Confirm Access

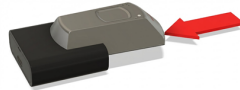
- Make sure your organization has a MākuSmart account and your email address is enrolled for remote work.

2. Download the App

- Download and open the MākuSafe app on your phone or tablet.



Apple App Store QR code | Google Play QR code



3. Charge the Device

- Plug the Ally Wearable Device into the smart docking accessory using the included USB to USB-C cord and power adapter.

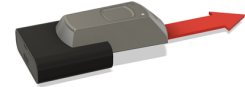
4. Pair Your Device

- **Open and log into** the app with your email
- **With app open, device inserted in powered dock**
- Go to: **Settings > My Wearable**
- **Press the button** in the middle of the Ally Wearable Device **while charging**
- Wait for pairing confirmation from the app



5. Start Your Shift

- Remove the device from the dock
- Put on the armband (on your dominant upper arm)
- Insert the Ally Wearable into the locking holster until it clicks
- You're now “on-shift” and ready to work
- **Keep your app open through the day**



6. End Your Shift

- With your **app open and dock plugged in**
- Return the wearable to the smart dock to register as “off-shift”.

