

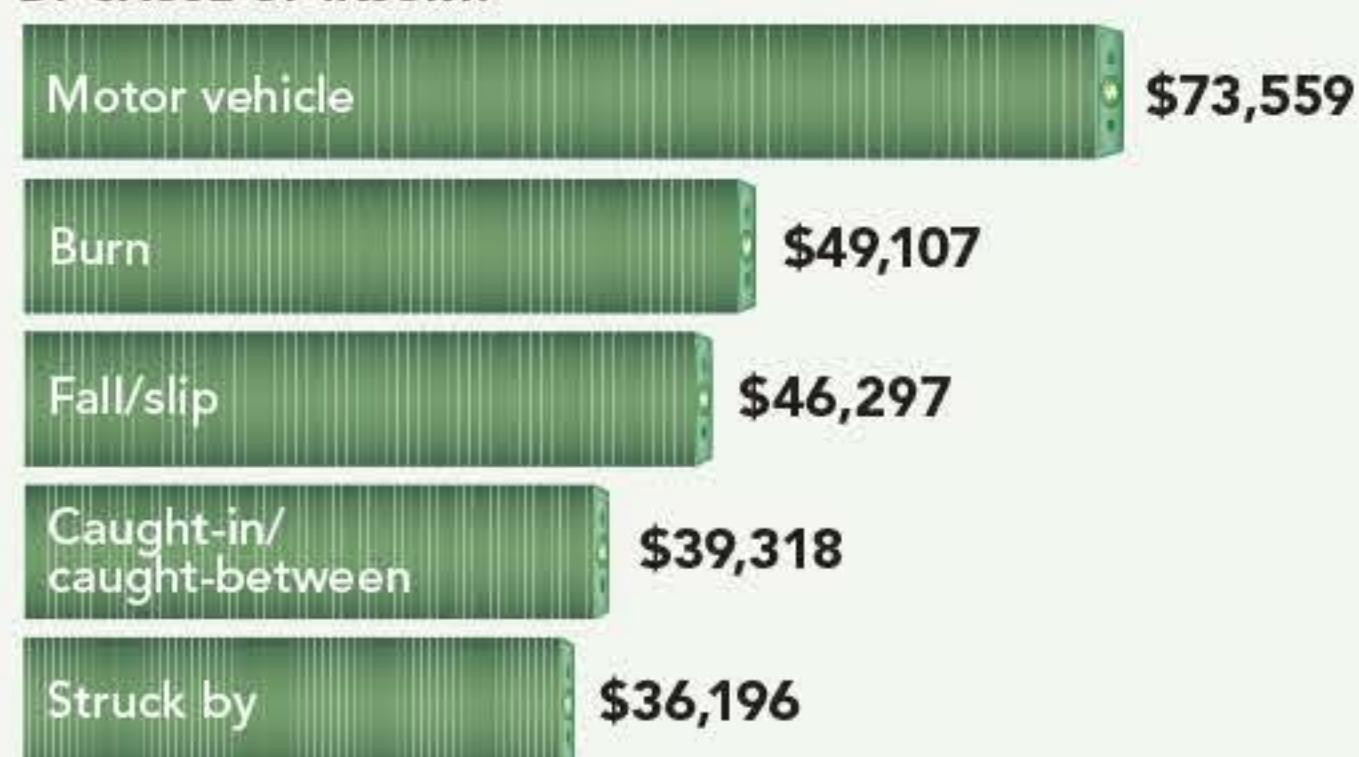
The ROI of safety

Knowing how much an injury costs is vital to determining the ROI of safety.

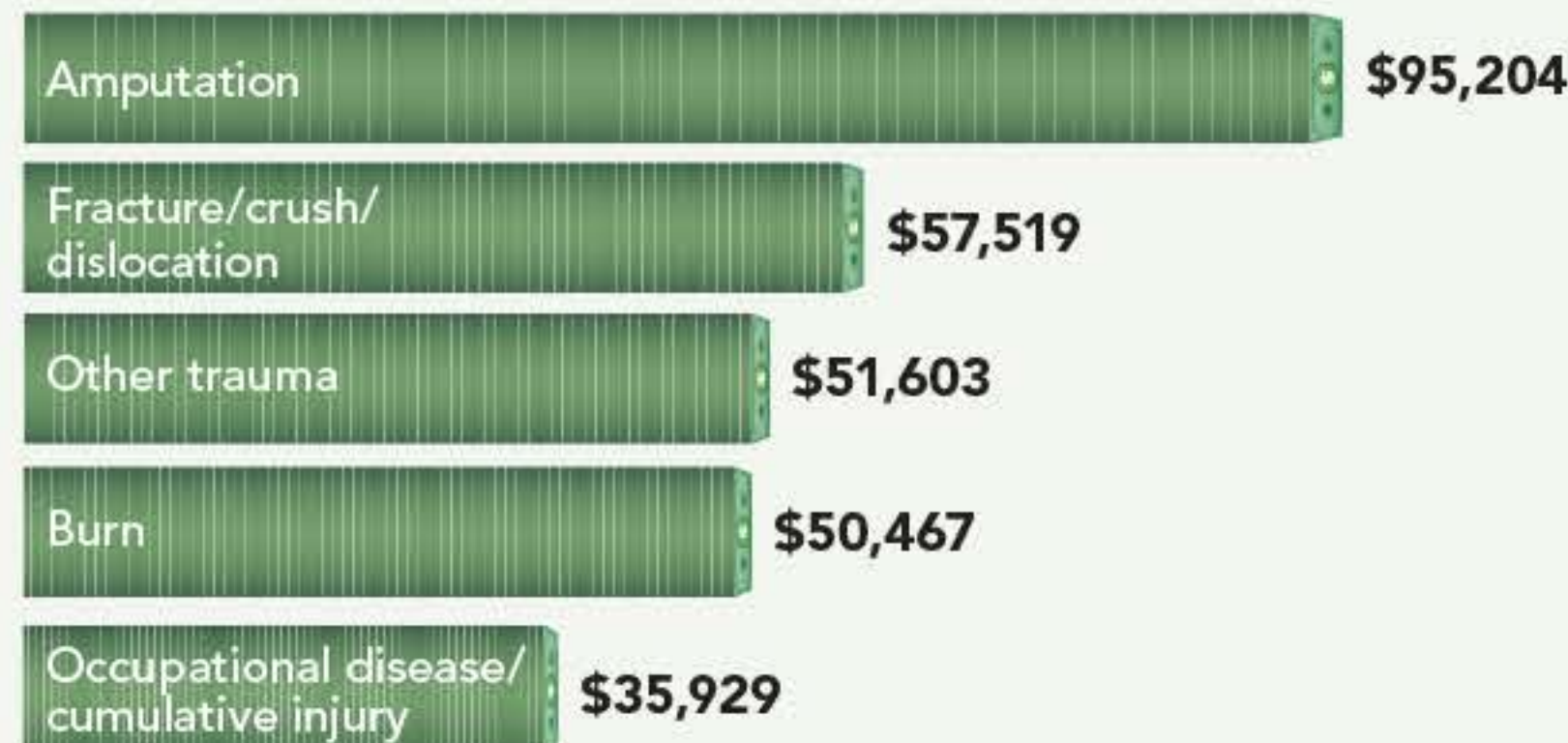
How much?

Here are some of the more expensive injury types by average cost per workers' compensation claim from 2015 to 2016.

BY CAUSE OF INJURY:



BY NATURE OF INJURY:



BY PART OF BODY:



Source: National Safety Council, Injury Facts, injuryfacts.nsc.org

Cost of occupational injuries and deaths, 2016



Total cost to society:
\$151.1 billion

- \$49.5 billion in wage and productivity losses
- \$48.3 billion in administrative expenses
- \$33.8 billion in medical expenses
- \$12.1 billion in employers' uninsured costs
- \$4.7 billion for motor vehicle damage
- \$2.7 billion for fire losses

Injury impact per worker =
\$1,000

This includes the value of goods or services each worker must produce to offset the cost of work injuries. It does not represent the average cost of a work-related injury.



\$32,000

Cost per medically consulted injury, including estimates of wage losses, medical expenses, administrative expenses and employer costs.

\$1.12 million: Cost per death

To read "The ROI of safety" feature printed in the January 2019 issue of Safety+Health magazine, go to safetyandhealthmagazine.com/articles/17819-ROI-infographic.